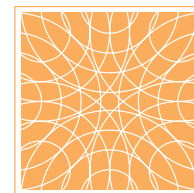


EAST POINT

REVISED ARCHITECTURE PACKAGE

JUNE 18, 2021



UNION STUDIO

ARCHITECTURE & COMMUNITY DESIGN



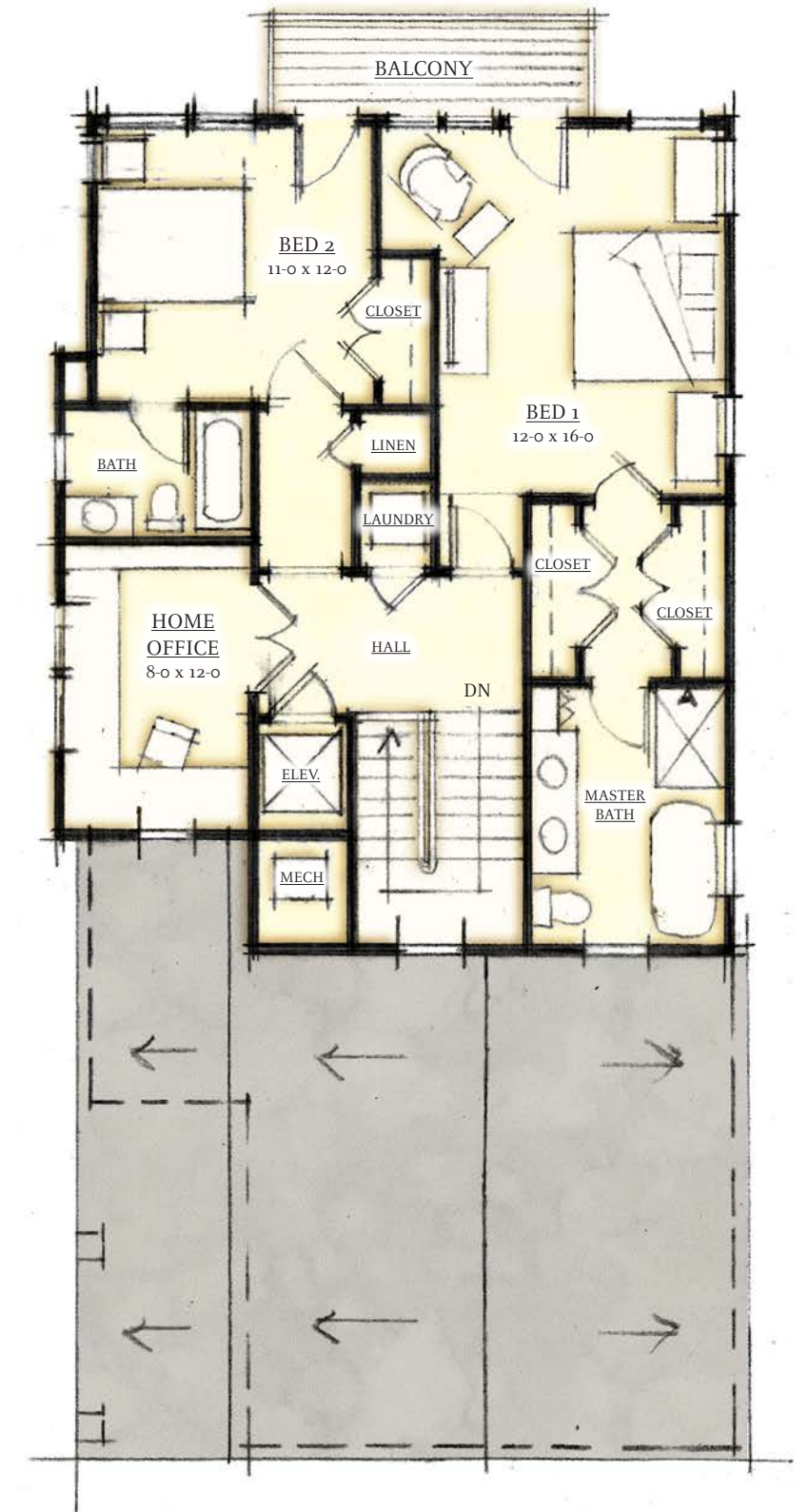
2,165 SQUARE FEET
2 BEDROOM, 2.5 BATH



KEY PLAN



FIRST FLOOR PLAN



SECOND FLOOR PLAN

SCALE: 1/8"=1'-0"
0 1' 2' 4' 8' 16' 32'

EAST POINT

PRELIMINARY ARCHITECTURE: WATERFRONT UNITS, DUPLEX AND SINGLE FAMILY

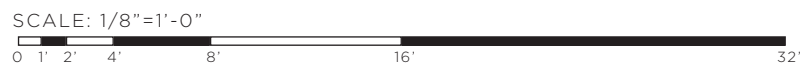
JUNE 18, 2021





FRONT ELEVATION

1,867 SQUARE FEET
3 BEDROOM, 2.5 BATH



KEY PLAN

45'-0"



FIRST FLOOR PLAN



SECOND FLOOR PLAN

EAST POINT

PRELIMINARY ARCHITECTURE: INLAND UNITS, DUPLEX AND SINGLE FAMILY

JUNE 18, 2021



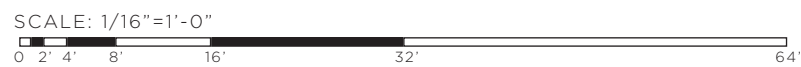


FRONT ELEVATION - 3-PACK

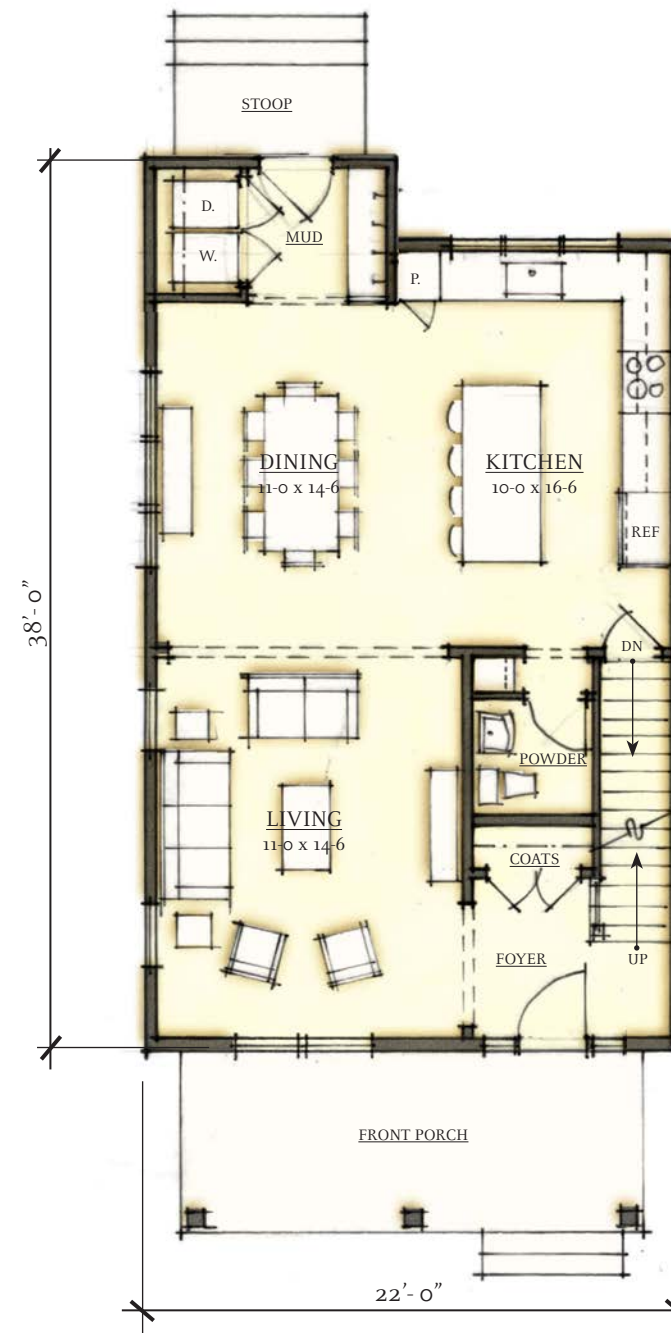


FRONT ELEVATION - 6-PACK

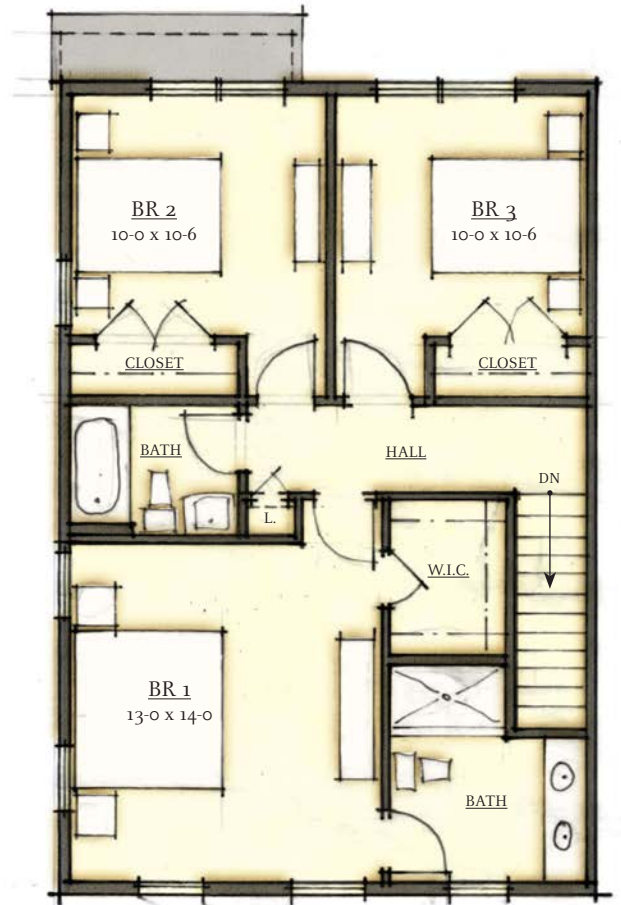
1,530 SQUARE FEET
3 BEDROOM, 2.5 BATH



KEY PLAN



FIRST FLOOR PLAN



SECOND FLOOR PLAN

EAST POINT

PRELIMINARY ARCHITECTURE: TOWNHOUSE UNITS

JUNE 18, 2021





FRONT ELEVATION

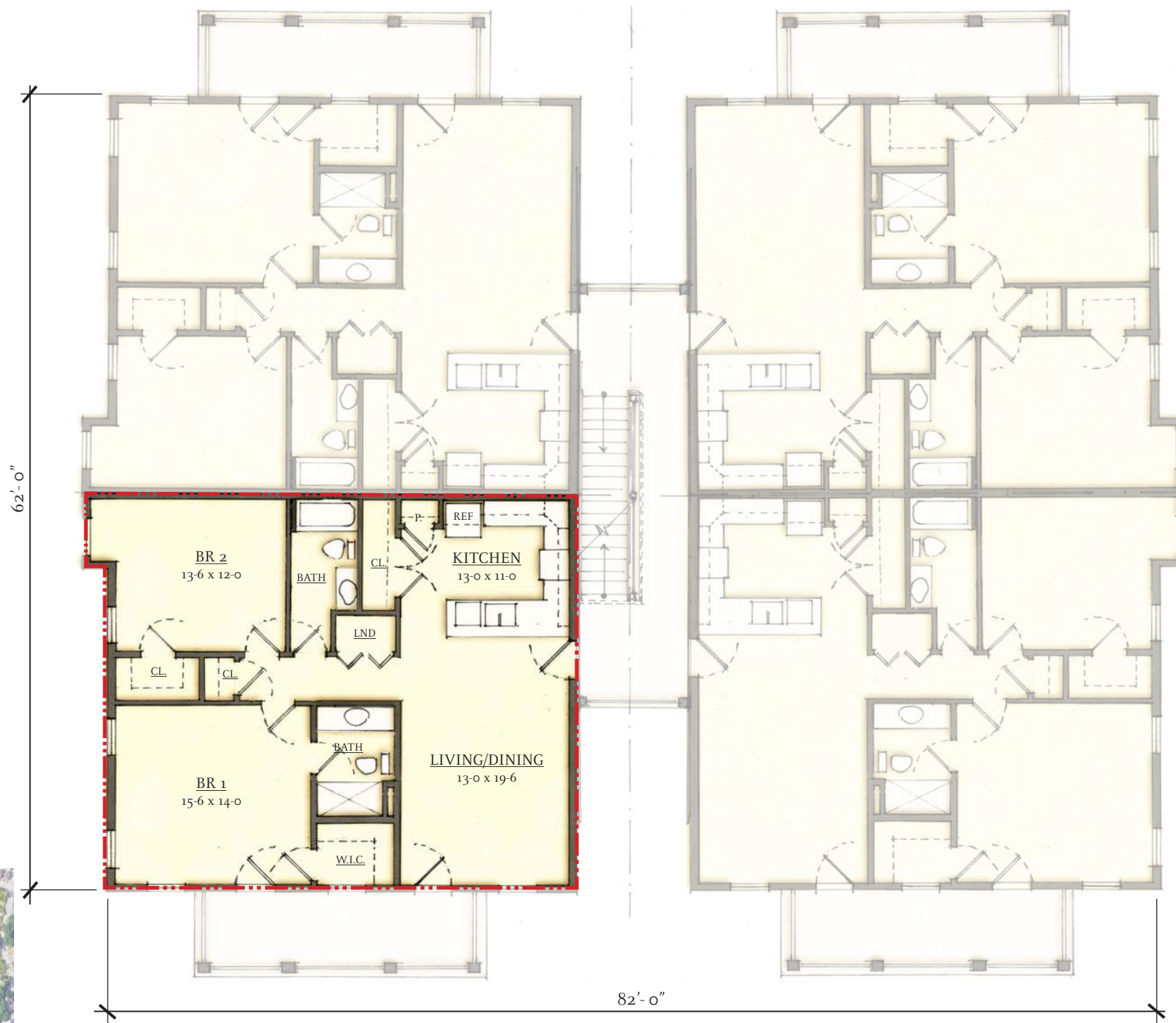


SIDE ELEVATION

1,160 SQUARE FEET
2 BEDROOM, 2 BATH



KEY PLAN



TYPICAL FLOOR PLAN

SCALE: 1/16"=1'-0"
0' 2' 4' 8' 16' 32' 64'

SCALE: 3/32"=1'-0"
0' 1' 2' 4' 10' 20' 40'

EAST POINT

PRELIMINARY ARCHITECTURE: FLATS BUILDING PLANS

JUNE 18, 2021





FRONT ELEVATION



KEY PLAN

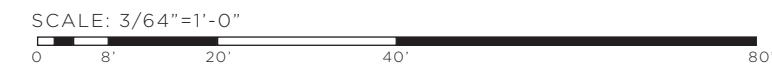


SIDE ELEVATION



RIVER ELEVATION

1,660 - 1,790 SQUARE FEET
2 BEDROOMS + STUDY, 2.5 BATH



TYPICAL FLOOR PLAN



EAST POINT

PRELIMINARY ARCHITECTURE: WATERFRONT FLATS BUILDING PLANS

JUNE 18, 2021



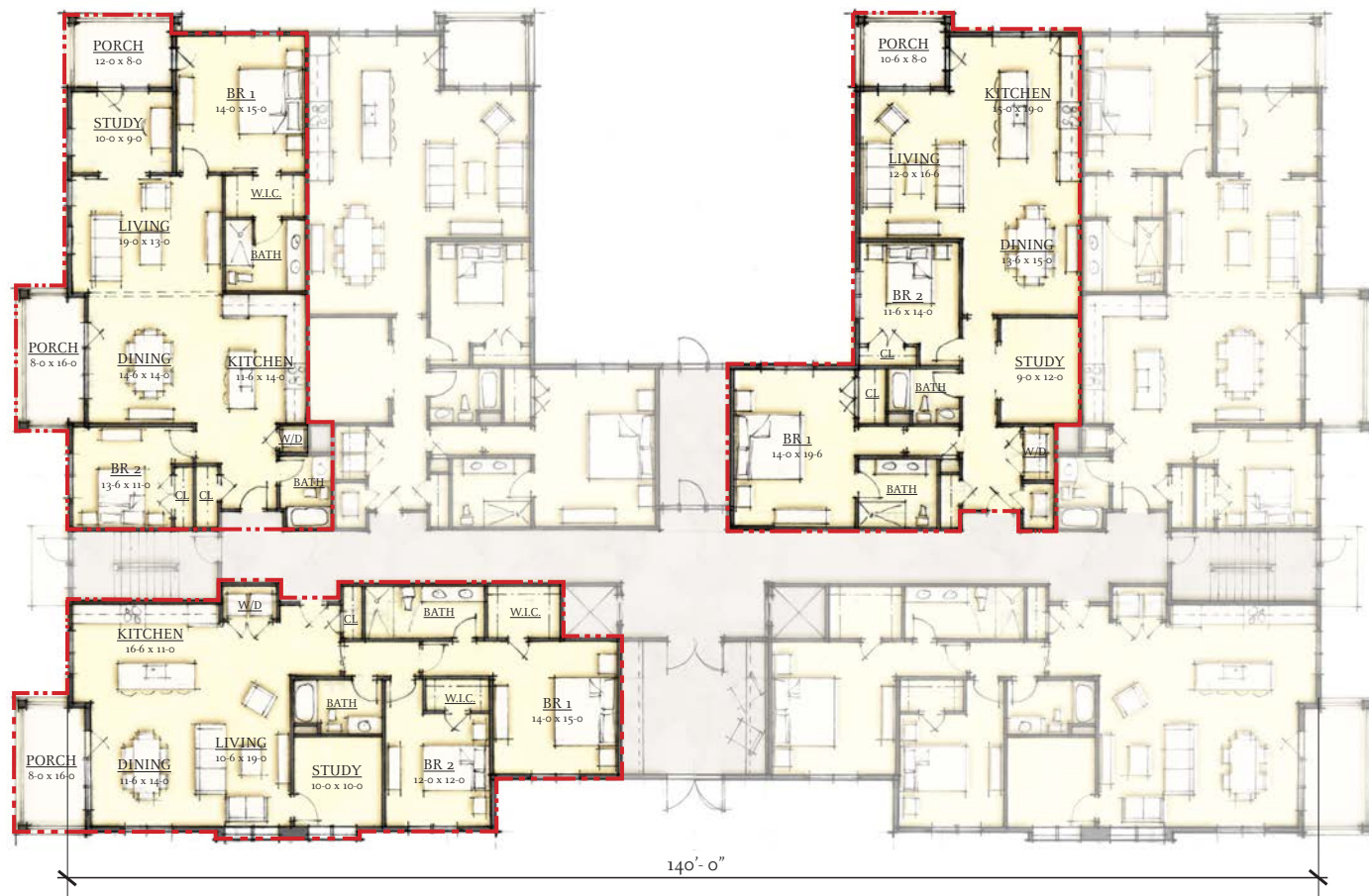


FRONT ELEVATION



KEY PLAN

1,660 - 1,790 SQUARE FEET
2/3 BEDROOMS + STUDY, 2/3 BATH



TYPICAL FLOOR PLAN



THIRD FLOOR PLAN

SCALE: 3/64"=1'-0"



EAST POINT

PRELIMINARY ARCHITECTURE: 16-UNIT MULTIFAMILY BUILDING PLANS

JUNE 18, 2021

