

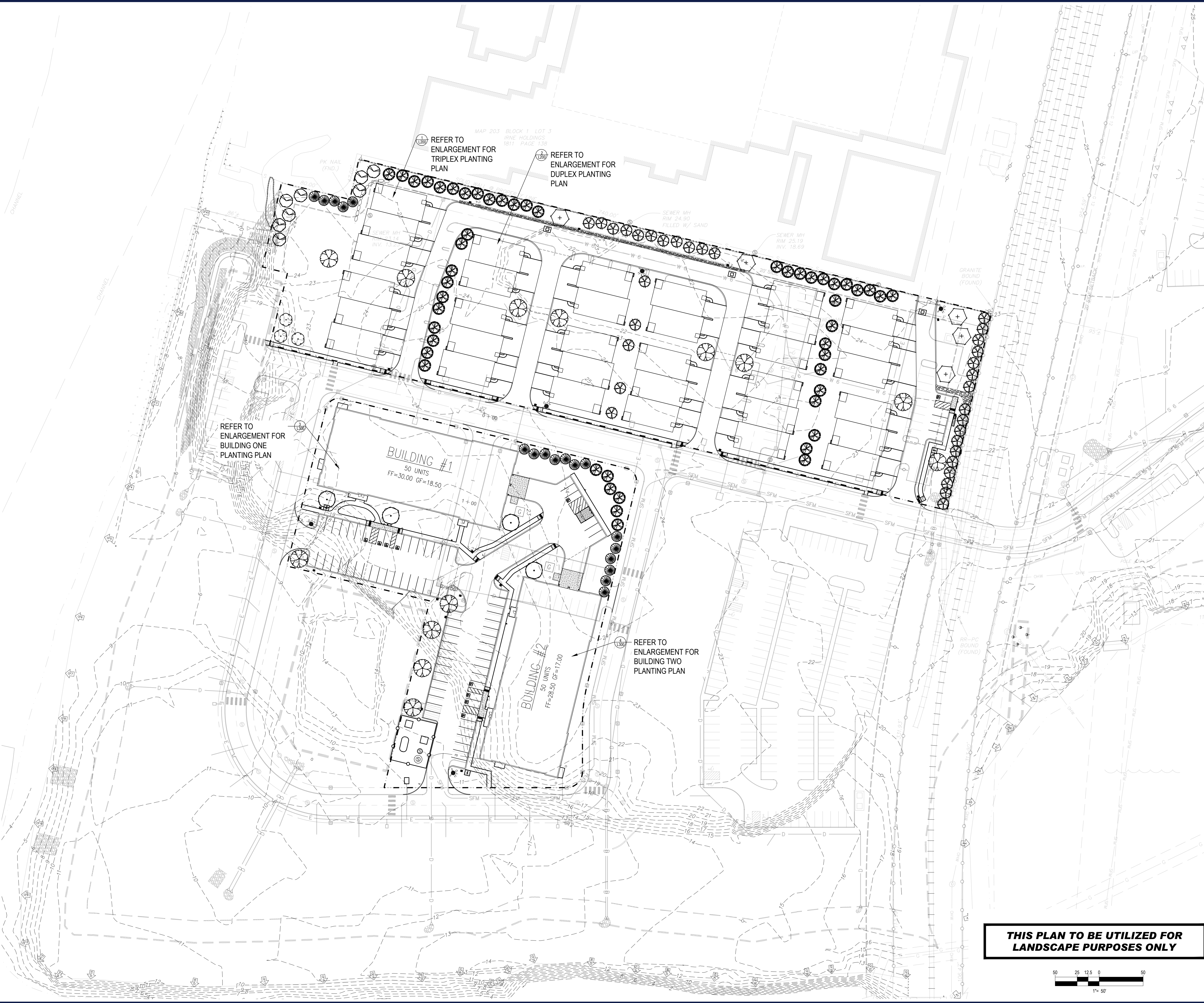


LANDSCAPE LEGEND

- EVERGREEN TREE PLANTINGS**
- ABIES CONCOLOR (WHITE FIR)
 - PICEA PUNGENS 'GLAUCA' (COLORADO BLUE SPRUCE)
 - THUJA OCCIDENTALIS 'GREEN GIANT' (GREEN GIANT ARBORVITAE)

- SHADE TREE PLANTINGS**
- ACER RUBRUM 'ARMSTRONG' (ARMSTRONG RED MAPLE)
 - ACER RUBRUM 'OCTOBER GLORY' (OCTOBER GLORY RED MAPLE)
 - GLEDITSIA TRIACANTHOS INERMIS 'SHADEMASTER' (SHADEMASTER HONEY LOCUST)
 - QUERCUS ALBA (WHITE OAK)

- FLOWERING ORNAMENTAL PLANTINGS**
- AMELANCHIER CANADENSIS (SHADBLOW SERVICEBERRY)
 - CORNUS FLORIDA (EASTERN DOGWOOD)
 - SYRINGIA RETICULATA 'IVORY SILK' (IVORY SILK JAPANESE TREE LILAC)



BOHLER
 SITE CIVIL AND CONSULTING ENGINEERING
 PROGRAM MANAGEMENT
 LANDSCAPE ARCHITECTURE
 SUSTAINABLE DESIGN
 PERMITTING SERVICES
 TRANSPORTATION SERVICES

REVISIONS

REV	DATE	COMMENT	DRAWN BY	CHECKED BY

811
 Know what's below.
 Call before you dig.
 ALWAYS CALL 811
 It's fast. It's free. It's the law.

FOR CONCEPT PURPOSES ONLY

THIS DRAWING IS INTENDED FOR MUNICIPAL AND/OR AGENCY REVIEW AND APPROVAL. IT IS NOT INTENDED AS A CONSTRUCTION DOCUMENT UNLESS INDICATED OTHERWISE.

PROJECT No.: MAB230082.00
 DRAWN BY: JJK LFM/ML
 CHECKED BY: 07/07/2023
 DATE: 07/07/2023
 CAD ID: MAB230082.00-LSCP-1A

PROPOSED SITE PLAN DOCUMENTS

FOR

EAST POINT
 203 ROGER WILLIAMS AVENUE
 CITY OF EAST PROVIDENCE
 PROVIDENCE COUNTY,
 RHODE ISLAND

BOHLER
 352 TURNPIKE ROAD
 SOUTHBOROUGH, MA 01772
 Phone: (508) 480-9900
 www.BohlerEngineering.com

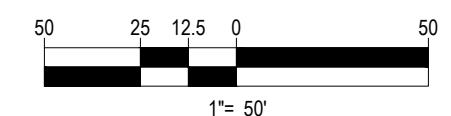
M.J. MRVA
 REGISTERED LANDSCAPE ARCHITECT
MASSACHUSETTS No. 1117
 RHODE ISLAND No. 413
 NEW YORK No. 00269
 NEW HAMPSHIRE No. 036
 CONNECTICUT No. 1309
 MARYLAND No. 4636
 VIRGINIA No. 0105
 TEXAS No. 22044

SHEET TITLE:
OVERALL LANDSCAPE PLAN

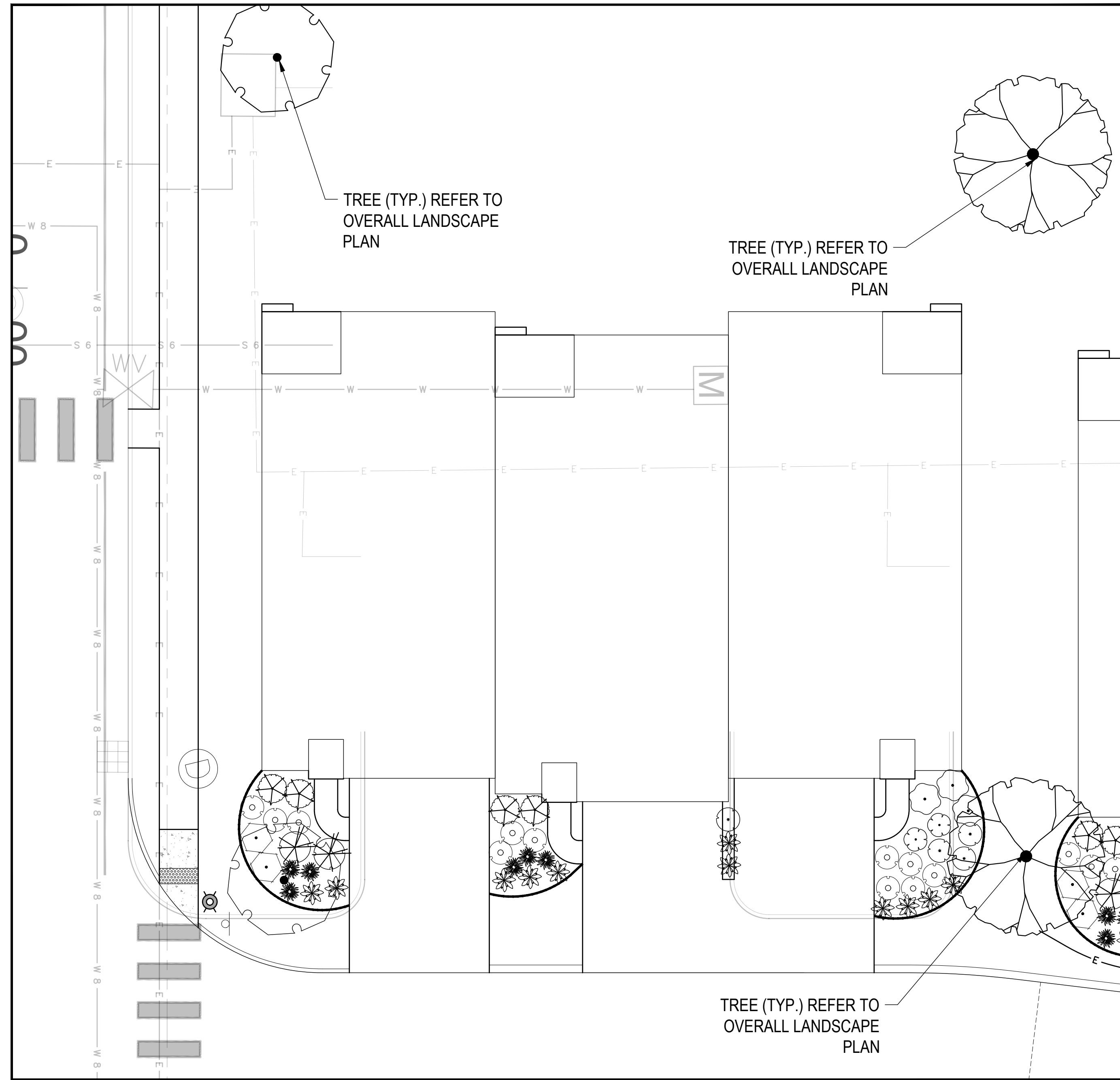
SHEET NUMBER:
L-100

ORG. DATE - 07/12/2023

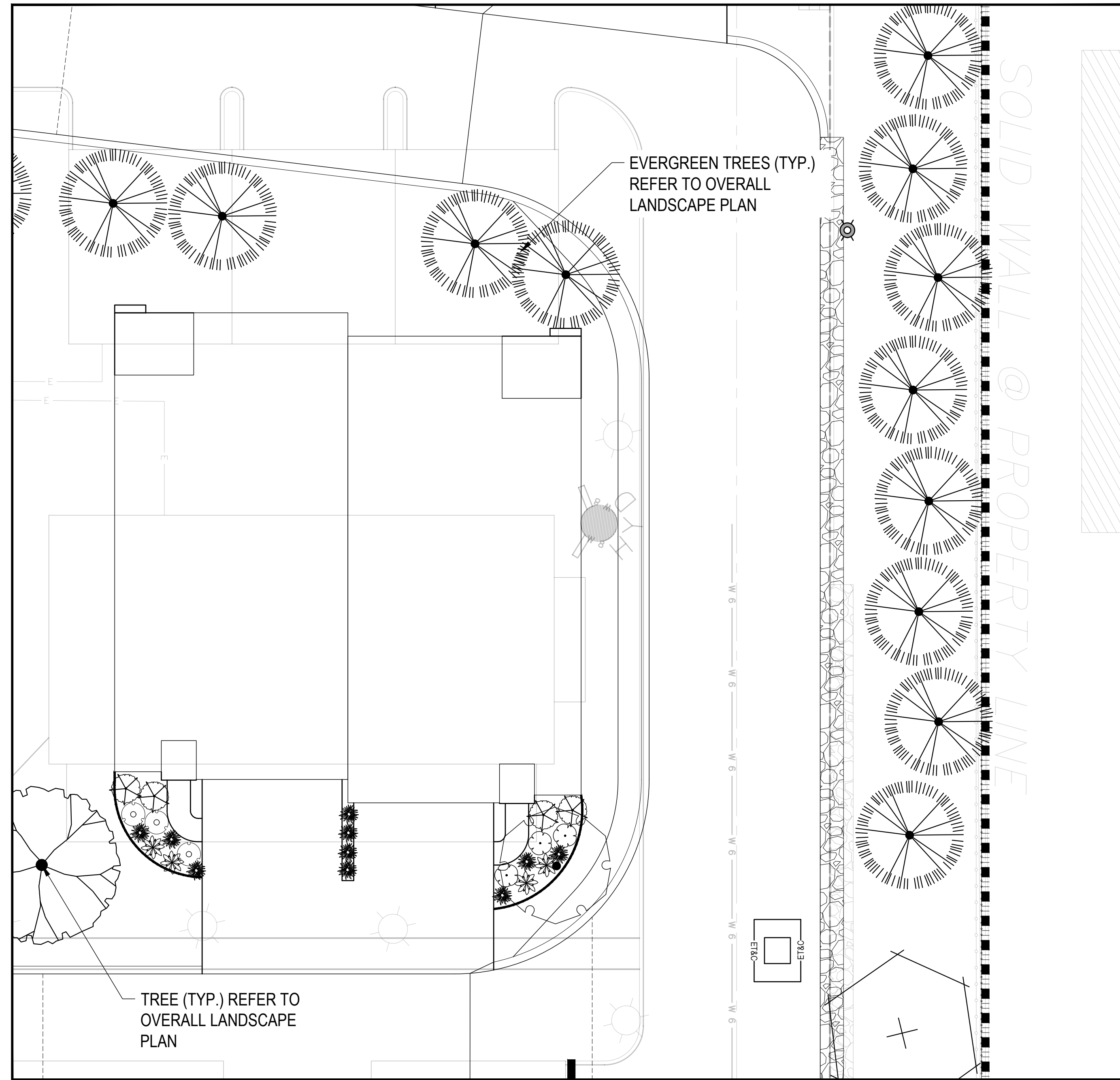
THIS PLAN TO BE UTILIZED FOR LANDSCAPE PURPOSES ONLY



P:\2023\MAB230082.00\CADDRAWINGS\PLAN SET\CIVIL SITE PLAN\MAB230082.00-LSCP-1A-Overall Layout.dwg



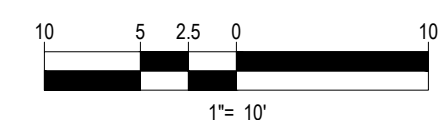
1 EAST POINT TRIPLEX PROTOTYPICAL UNITS
PLANTING PLAN ENLARGEMENT SCALE: 1" = 10'



2 EAST POINT DUPLEX PROTOTYPICAL UNITS
PLANTING PLAN ENLARGEMENT SCALE: 1" = 10'

LANDSCAPE SCHEDULE				
SYM.	QTY.	ROOTS	SIZE	PLANT NAME
ORNAMENTAL TREES				
	1	B-B	2-1/2" CAL. OR 8-10' HT. (CLUMP)	OPTION A: BIRCH (JACQUEMONTI CLUMP, PAPYRIFERA), CHERRY VARIETIES (SARGENT, ACCOLADE, KOREAN, AUTUMN FLOWERING, CANARY SELECT RED), EASTERN REDBUD, THORNLESS HAWTHORN, SAUCEUR MAGNOLIA OPTION B: SINGLE STEM KOUSA DOGWOOD, JAPANESE TREE LILAC, PYRUS VARIETIES (CLEVELAND SELECT, REDSPIRE) SHADBLow SERVICEBERRY, STAR MAGNOLIA
DECIDUOUS SHRUBS				
	27	B-B	24-48" OR 18" SPRD.	OPTIONS: RHODODENDRON AZALEA DELAWARE VALLEY WHITE, RHODODENDRON OBTUSUM, RHODODENDRON KURUME HINO CRIMSON, LANDMARK P.J.M., VIBURNUM COMPACT KOREANSPICE
EVERGREEN SHRUBS (LOW, COLUMNAR, STANDARD)				
	0	CONTAINER	24-48" OR 18" SPRD.	OPTION A: COLUMNAR: HICKS YEW, SPARTAN JUNIPER, EMERALD ARBORVITAE (STANDARD), AZALEA (BLAUWIS PINK, GRARD'S CRIMSON, DELAWARE VALLEY WHITE), DENSFORMS YEW, MT. FIRE ANDROMEDA, GRARD'S RAINBOW LEUCOTHOE, RHODODENDRON (BOULD DE NEIGE, BESSE HOWELL, TRADITION) LOW: DWARF ENGLISH BOXWOOD, NANA LEUCOTHOE, ELF MT. LAUREL, RHODODENDRON (PURPLE GEM, YAKU FAIRY) OPTION B: COLUMNAR: HICKS YEW, SPARTAN JUNIPER, EMERALD ARBORVITAE (STANDARD), AZALEA VARIETIES HINO CRIMSON, STEWARTSONA, BIXBY, GRARD'S HOT SHOT, CORNELL PINK, INKBERRY, MT. FIRE ANDROMEDA, DENSFORMS YEW, OLYMPIC FIRE MT. LAUREL, RHODODENDRON (CHRONOS, NOVA ZEMBLA, LANDMARK P.J.M.) LOW: GEM BOX INKBERRY, AZALEA (BIXBY, DWARF ENCORE), NEST SPRUCE, FIRE CHIEF GLOBE ARBORVITAE
ORNAMENTAL GRASSES				
	16	CONTAINER	2 GAL.	FEATHER REED GRASS KARL, FOERSTER, LITTLE BUNNY FOUNTAIN GRASS

LANDSCAPE SCHEDULE				
SYM.	QTY.	ROOTS	SIZE	PLANT NAME
ORNAMENTAL TREES				
	1	B-B	2-1/2" CAL. OR 8-10' HT. (CLUMP)	OPTION A: BIRCH (JACQUEMONTI CLUMP, PAPYRIFERA), CHERRY VARIETIES (SARGENT, ACCOLADE, KOREAN, AUTUMN FLOWERING, CANARY SELECT RED), EASTERN REDBUD, THORNLESS HAWTHORN, SAUCEUR MAGNOLIA OPTION B: SINGLE STEM KOUSA DOGWOOD, JAPANESE TREE LILAC, PYRUS VARIETIES (CLEVELAND SELECT, REDSPIRE) SHADBLow SERVICEBERRY, STAR MAGNOLIA
DECIDUOUS SHRUBS				
	10	B-B	24-48" OR 18" SPRD.	OPTIONS: RHODODENDRON AZALEA DELAWARE VALLEY WHITE, RHODODENDRON OBTUSUM, RHODODENDRON KURUME HINO CRIMSON, LANDMARK P.J.M., VIBURNUM COMPACT KOREANSPICE
EVERGREEN SHRUBS (LOW, COLUMNAR, STANDARD)				
	0	CONTAINER	24-48" OR 18" SPRD.	OPTION A: COLUMNAR: HICKS YEW, SPARTAN JUNIPER, EMERALD ARBORVITAE (STANDARD), AZALEA (BLAUWIS PINK, GRARD'S CRIMSON, DELAWARE VALLEY WHITE), DENSFORMS YEW, MT. FIRE ANDROMEDA, GRARD'S RAINBOW LEUCOTHOE, RHODODENDRON (BOULD DE NEIGE, BESSE HOWELL, TRADITION) LOW: DWARF ENGLISH BOXWOOD, NANA LEUCOTHOE, ELF MT. LAUREL, RHODODENDRON (PURPLE GEM, YAKU FAIRY) OPTION B: COLUMNAR: HICKS YEW, SPARTAN JUNIPER, EMERALD ARBORVITAE (STANDARD), AZALEA VARIETIES HINO CRIMSON, STEWARTSONA, BIXBY, GRARD'S HOT SHOT, CORNELL PINK, INKBERRY, MT. FIRE ANDROMEDA, DENSFORMS YEW, OLYMPIC FIRE MT. LAUREL, RHODODENDRON (CHRONOS, NOVA ZEMBLA, LANDMARK P.J.M.) LOW: GEM BOX INKBERRY, AZALEA (BIXBY, DWARF ENCORE), NEST SPRUCE, FIRE CHIEF GLOBE ARBORVITAE
ORNAMENTAL GRASSES				
	14	CONTAINER	2 GAL.	FEATHER REED GRASS KARL, FOERSTER, LITTLE BUNNY FOUNTAIN GRASS



REVISIONS			
REV	DATE	COMMENT	DRAWN BY / CHECKED BY

811
Know what's below.
Call before you dig.
ALWAYS CALL 811
It's fast. It's free. It's the law.

FOR CONCEPT PURPOSES ONLY
THIS DRAWING IS INTENDED FOR MUNICIPAL AND/OR AGENCY REVIEW AND APPROVAL. IT IS NOT INTENDED AS A CONSTRUCTION DOCUMENT UNLESS INDICATED OTHERWISE.

PROJECT No.: MAB230082.00
DRAWN BY: J.K. LFM
CHECKED BY: LFM
DATE: 07/07/2023
CAD ID: MAB230082.00-LSCP-1A

PROPOSED SITE PLAN DOCUMENTS

FOR _____
EAST POINT
203 ROGER WILLIAMS AVENUE
CITY OF EAST PROVIDENCE
PROVIDENCE COUNTY,
RHODE ISLAND

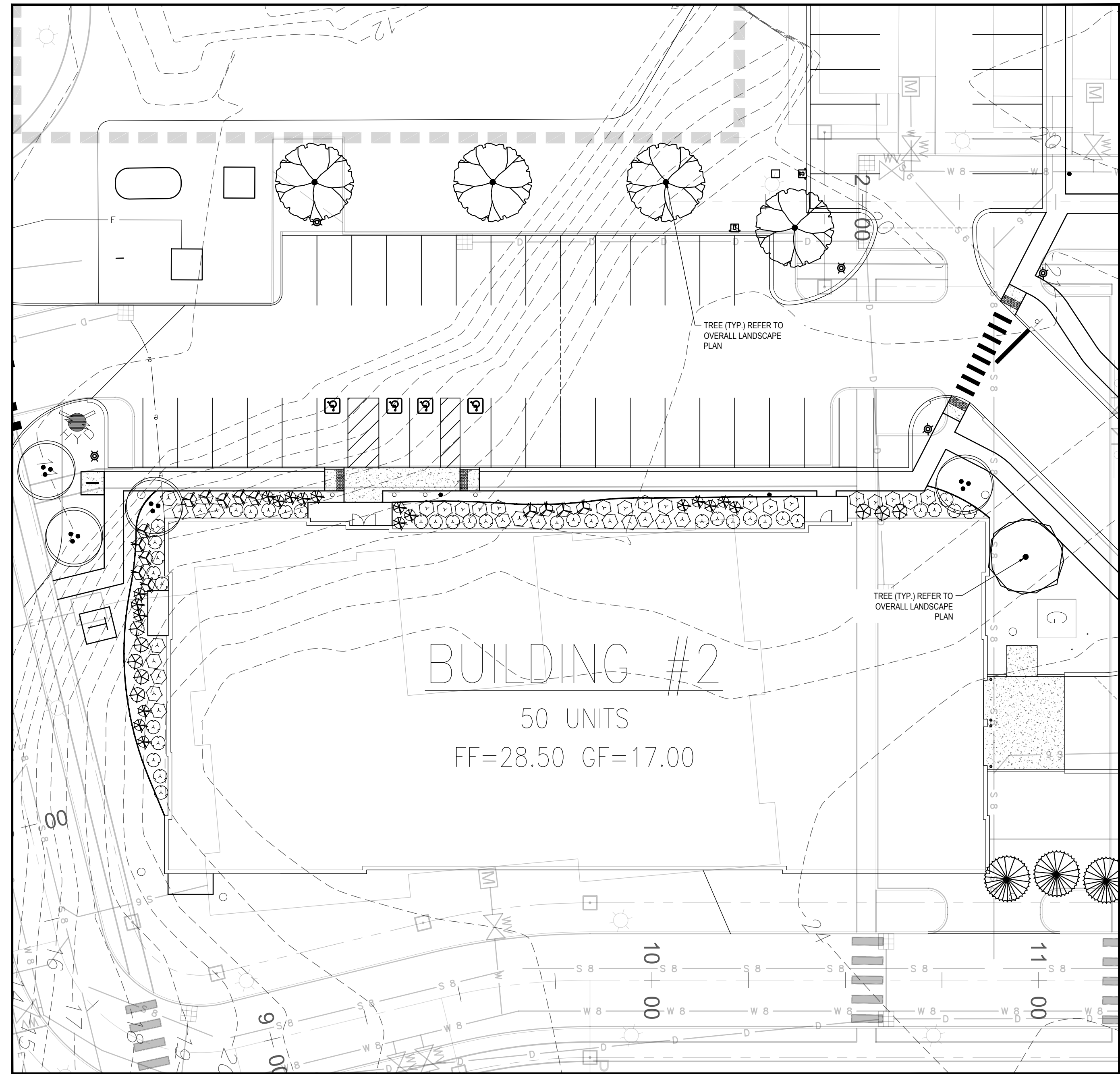
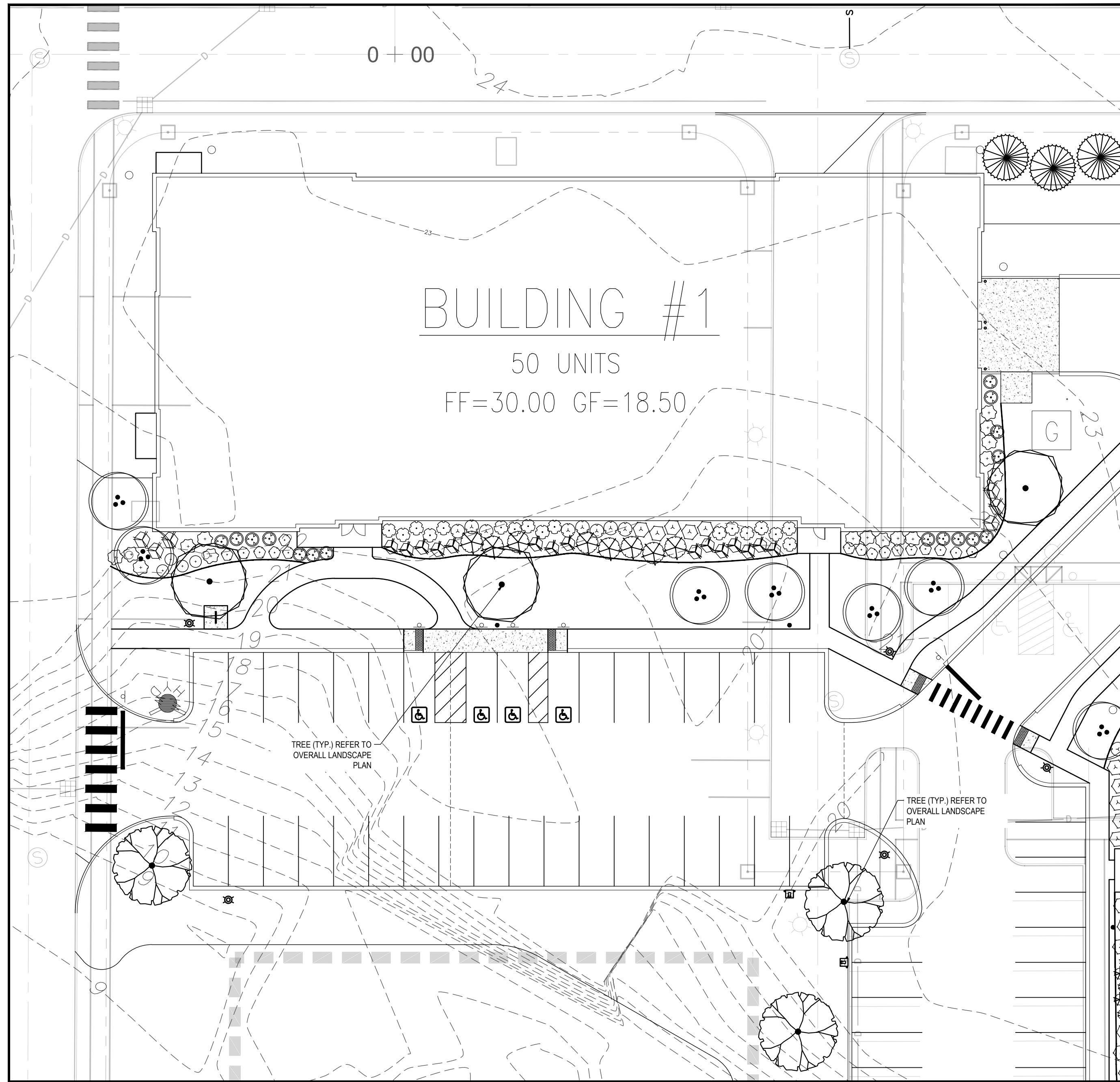
BOHLER
352 TURNPIKE ROAD
SOUTHBOROUGH, MA 01772
Phone: (508) 480-9900
www.BohlerEngineering.com

M.J. MRVA
REGISTERED LANDSCAPE ARCHITECT
MASSACHUSETTS No. 1117
RHODE ISLAND No. 419
NEW YORK No. 00259
NEW HAMPSHIRE No. 036
CONNECTICUT No. 1309
MICHIGAN No. 4626
VIRGINIA No. 41074
WASHINGTON No. 22074

SHEET TITLE:
LANDSCAPE ENLARGEMENTS

SHEET NUMBER:
L-200

ORG. DATE - 07/12/2023

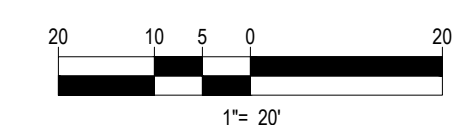


3 EAST POINT BUILDING ONE
PLANTING PLAN ENLARGEMENT SCALE: 1" = 20'

4 EAST POINT BUILDING TWO
PLANTING PLAN ENLARGEMENT SCALE: 1" = 20'

LANDSCAPE SCHEDULE				
SYM.	QTY.	ROOTS	SIZE	PLANT NAME
ORNAMENTAL TREES				
	6	B-B	2-1/2" CAL. OR 8-10" HT. (CLUMP)	OPTION A: BIRCH (JACQUEMONTI CLUMP, PAPYRIFERA), CHERRY VARIETIES (SWEET, ACCORDIA, KOREAN, AUTUMN FLOWERING, CANARY SELECT RED), EASTERN REDBUD, THORNLESS HAWTHORN, SAUCER MAGNOLIA OPTION B: SINGLE STEM KOUSA DOGWOOD, JAPANESE TREE LILAC, PYRUS VARIETIES (CLEVELAND SELECT, REDSPIRE) SHADBLow SERVICEBERRY, STAR MAGNOLIA
DECIDUOUS SHRUBS				
	60	B-B	24-48" OR 18" SPRD.	OPTION A: AZALEA (GIBRALTAR, WHITE LIGHTS), BLUEBERRY LOWBUSH, SUMMERSWEET, CLEMATIS, COTONEASTER VARIETIES (CORAL BEAUTY, APICULATUS, ROYAL BEAUTY), BOBO HYDRANGEA OPTION B: ARCTIC FIRE REDTONG DOGWOOD, DWARF KOREAN LILAC, OAKLEAF HYDRANGEA, NIKO BLUE HYDRANGEA, VIBURNUM (SPICE BABY, COMPACTUM, WABI-SABI, LOWBUSH CRANBERRY, LITTLE GLOBIN RED WINTERBERRY)
EVERGREEN SHRUBS (LOW, COLUMNAR, STANDARD)				
	51	CONTAINER	24-48" OR 18" SPRD.	OPTION A: COLUMNAR: HICKS YEW, SPARTAN JUNIPER, EMERALD ARBORVITAE (STANDARD), AZALEA (BLAUWIS PINK, GIRARD'S CRIMSON, DELAWARE VALLEY WHITE), GENSIFORMIS YEW, MT. FIRE ANDROMEDA, GIRARD'S RAINBOW LEUCOTHOE, RHODOENDRON (BOULD DE NEIGE, BESSE HOWELL, TRADITION) LOW: DWARF ENGLISH BOXWOOD, NANA LEUCOTHOE, ELF MT. LAUREL, RHODOENDRON (PURPLE GEM, YAKU FAIRY) OPTION B: COLUMNAR: HICKS YEW, SPARTAN JUNIPER, EMERALD ARBORVITAE (STANDARD), AZALEA VARIETIES: NIKO CRIMSON, STEWARTSONA, BIXBY, GIRARD'S HOT SHOT, CORNELL PINK, INKBERRY, MT. FIRE ANDROMEDA, GENSIFORMIS YEW, OLYMPIC FIRE MT. LAUREL, RHODOENDRON (CHOKWICKS, NOVA ZENGBA, LANDMARK F-10) LOW: GEM BOX INKBERRY, AZALEA (BIXBY, DWARF ENCORE), NEST SPRUCE, FIRE CHIEF GLOBE ARBORVITAE

LANDSCAPE SCHEDULE				
SYM.	QTY.	ROOTS	SIZE	PLANT NAME
ORNAMENTAL TREES				
	4	B-B	2-1/2" CAL. OR 8-10" HT. (CLUMP)	OPTION A: BIRCH (JACQUEMONTI CLUMP, PAPYRIFERA), CHERRY VARIETIES (SWEET, ACCORDIA, KOREAN, AUTUMN FLOWERING, CANARY SELECT RED), EASTERN REDBUD, THORNLESS HAWTHORN, SAUCER MAGNOLIA OPTION B: SINGLE STEM KOUSA DOGWOOD, JAPANESE TREE LILAC, PYRUS VARIETIES (CLEVELAND SELECT, REDSPIRE) SHADBLow SERVICEBERRY, STAR MAGNOLIA
DECIDUOUS SHRUBS				
	62	B-B	24-48" OR 18" SPRD.	OPTION A: AZALEA (GIBRALTAR, WHITE LIGHTS), BLUEBERRY LOWBUSH, SUMMERSWEET, CLEMATIS, COTONEASTER VARIETIES (CORAL BEAUTY, APICULATUS, ROYAL BEAUTY), BOBO HYDRANGEA OPTION B: ARCTIC FIRE REDTONG DOGWOOD, DWARF KOREAN LILAC, OAKLEAF HYDRANGEA, NIKO BLUE HYDRANGEA, VIBURNUM (SPICE BABY, COMPACTUM, WABI-SABI, LOWBUSH CRANBERRY, LITTLE GLOBIN RED WINTERBERRY)
EVERGREEN SHRUBS (LOW, COLUMNAR, STANDARD)				
	55	CONTAINER	24-48" OR 18" SPRD.	OPTION A: COLUMNAR: HICKS YEW, SPARTAN JUNIPER, EMERALD ARBORVITAE (STANDARD), AZALEA (BLAUWIS PINK, GIRARD'S CRIMSON, DELAWARE VALLEY WHITE), GENSIFORMIS YEW, MT. FIRE ANDROMEDA, GIRARD'S RAINBOW LEUCOTHOE, RHODOENDRON (BOULD DE NEIGE, BESSE HOWELL, TRADITION) LOW: DWARF ENGLISH BOXWOOD, NANA LEUCOTHOE, ELF MT. LAUREL, RHODOENDRON (PURPLE GEM, YAKU FAIRY) OPTION B: COLUMNAR: HICKS YEW, SPARTAN JUNIPER, EMERALD ARBORVITAE (STANDARD), AZALEA VARIETIES: NIKO CRIMSON, STEWARTSONA, BIXBY, GIRARD'S HOT SHOT, CORNELL PINK, INKBERRY, MT. FIRE ANDROMEDA, GENSIFORMIS YEW, OLYMPIC FIRE MT. LAUREL, RHODOENDRON (CHOKWICKS, NOVA ZENGBA, LANDMARK F-10) LOW: GEM BOX INKBERRY, AZALEA (BIXBY, DWARF ENCORE), NEST SPRUCE, FIRE CHIEF GLOBE ARBORVITAE



REVISIONS			
REV	DATE	COMMENT	DRAWN BY / CHECKED BY

811
Know what's below.
Call before you dig.
ALWAYS CALL 811
It's fast. It's free. It's the law.

FOR CONCEPT PURPOSES ONLY
THIS DRAWING IS INTENDED FOR MUNICIPAL AND/OR AGENCY REVIEW AND APPROVAL. IT IS NOT INTENDED AS A CONSTRUCTION DOCUMENT UNLESS INDICATED OTHERWISE.
PROJECT No.: MAB230082.00
DRAWN BY: LFK
CHECKED BY: LFK
DATE: 07/12/23
CAD ID: MAB230082.00-LSCP-1A

PROPOSED SITE PLAN DOCUMENTS
FOR
EAST POINT
203 ROGER WILLIAMS AVENUE
CITY OF EAST PROVIDENCE
PROVIDENCE COUNTY,
RHODE ISLAND

BOHLER
352 TURNPIKE ROAD
SOUTHBOROUGH, MA 01772
Phone: (508) 480-9900
www.BohlerEngineering.com

M.J. MRVA
REGISTERED LANDSCAPE ARCHITECT
MASSACHUSETTS No. 1117
RHODE ISLAND No. 419
NEW YORK No. 00259
NEW HAMPSHIRE No. 036
CONNECTICUT No. 1309
MICHIGAN No. 4626
VIRGINIA No. 21214

SHEET TITLE:
LANDSCAPE ENLARGEMENTS
SHEET NUMBER:
L-300
ORG. DATE - 07/12/2023

P:\2023\MA230082.00\CADD\DRAWINGS\PLAN SET\SCHEMATIC SITE PLAN\MAB230082.00-LSCP-1A.dwg LAYOUT: L-300 ENLARGEMENT